



KAPA™ Universal Ladder

1. Product Description

The KAPA Universal Ladder Kit is designed for determining the approximate size and quantity of double-stranded DNA on agarose gel. KAPA Universal Ladder kits contain eighteen DNA fragments (in base pairs): 100, 150, 200, 300, 400, **500**, 600, 800, **1000**, 1200, **1600**, 2000, 3000, **4000**, 5000, 6000, 8000, and 10000. The KAPA Universal Ladder contains four reference bands (500, 1000, 1600, and 4000) for orientation. Kits are formulated with DNA loading dye for direct loading on agarose gel.

2. Product Features

- Size determination of dsDNA on agarose gel
- Formulated with loading dye for direct loading on gel
- Stable at room temperature
- Reference bands for orientation

3. Product Specifications

3.1 Concentration

100 ng/μl

3.2 Storage and handling

Upon arrival, store kit components at room temperature or 4 °C for up to 6 months. Store at -20 °C for longer-term storage.

3.3 Storage buffer

0.017% SDS, 10 mM Tris-HCl (pH 8.0), 10 mM EDTA, 0.021% Orange G, 0.004% xylene cyanol and 10% glycerol.

3.4 DNA loading dye (6X)

0.1% SDS, 60 mM Tris-HCl (pH 8.0), 60 mM EDTA, 0.125% Orange G, 0.025% xylene cyanol and 60% glycerol.

3.5 Quality control

The absence of nucleases is confirmed by agarose gel electrophoresis showing well defined bands and no degradation.

3.6 Product Use Limitations

Kit components are sold exclusively for research purposes and *in vitro* use. Neither the product, nor any individual components, were tested for use in diagnostic applications or for drug development, nor is it suitable for administration to humans or animals. Please refer to the MSDS, available upon request.

KK6302

200 lanes, 5 μl/lane

KAPA Universal DNA Ladder Kit

Contains:

- KAPA Universal DNA Ladder (100 ng/μl) 1 x 1 ml
- KAPA Loading Dye (6X) 1 x 1.5 ml

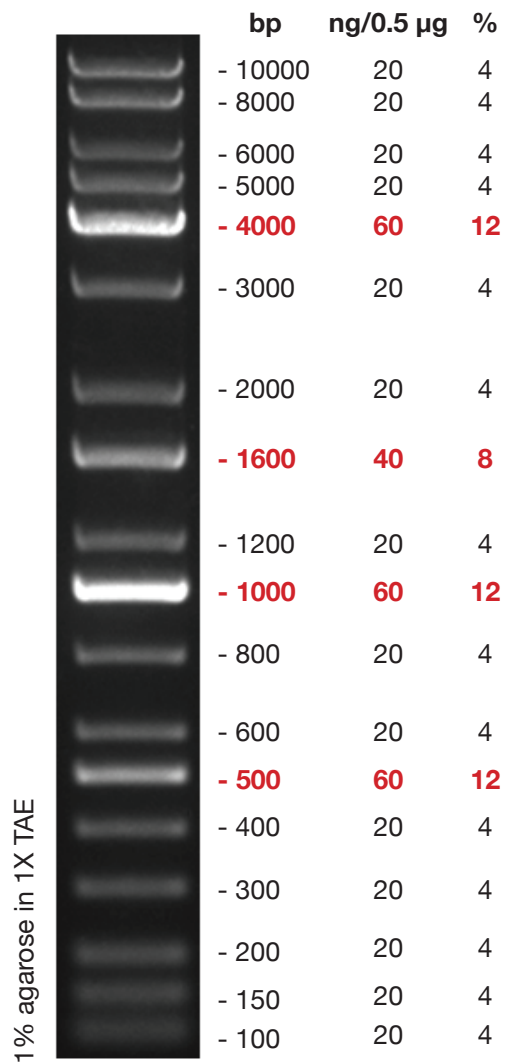
KK6303

1000 lanes, 5 μl/lane

KAPA Universal DNA Ladder Kit

Contains:

- KAPA Universal DNA Ladder (100 ng/μl) 5 x 1 ml
- KAPA Loading Dye (6X) 5 x 1.5 ml





4. Loading Protocol

1. If stored at -20 °C, mix gently after thawing
2. Load 5 µl per 1 mm gel lane

Notes:

- Do not heat before loading
- Dilute DNA sample with the DNA Loading Dye (6X): mix 1 volume of the dye solution with 5 volumes of the DNA sample
- For quantification, load an amount of sample similar to the nearest band of the KAPA Universal Ladder
- Visualize DNA by staining with ethidium bromide or with SYBR® Green I dye

For technical support please contact: support@kapabiosystems.com

Boston, Massachusetts, United States

600 West Cummings Park, Suite 2250
Woburn, MA, 01801 U.S.A.
Tel: +1 781 497 2933 Fax: +1 781 497 2934
Email: info@kapabiosystems.com

Cape Town, South Africa

2nd Floor, Old Warehouse Building, Black River Park,
Fir Road, Observatory, 7925 Cape Town, South Africa
Tel: +27 21 448 8200 Fax: +27 21 448 6503
Email: info@kapabiosystems.com